



Seattle Wings Chapter WA-A

Periodic News Letter
November 2024



Generative Creation by fellow rider Randall Marsh 2024

Have you checked out the **Chapter "A" Website lately?**
Our Webmaster works on it almost daily, Check it out!



<https://www.gwta-waa.com>

[Calendar](#) [Newsletters & Emails](#)

[Local Chapter Meeting Places](#) [Photos](#) [Staff](#) [Forms](#)

[Goldwing Technical Service Bulletins - 1988 through 2012.](#)

AND SOOOOO much more!

Greetings from the Chapter Director



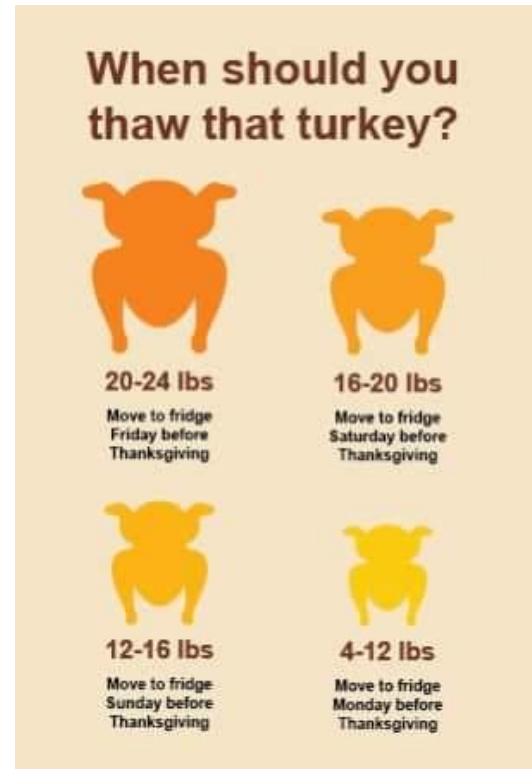
Happy Harvest to all,

I am thankful....

For family and friends.

For beautiful days here in the great Northwest.

And that comfortable two seat bikes exist.



My 2025 goals for GWTA WA A are more rides monthly, a social event every month, making new friends and keeping the old, and meeting Buck Rogers. That being said I will be attending the Chapter C planning meeting on Sunday, January 12th at 2pm.

Those attending will have a great time at the GWTA State Christmas Party on December 7th. *RSVP deadline was Nov 15th*. Contact Vonda Brest for info.

Looking forward to seeing you all on Saturday November 23rd monthly meeting.

GWTA members don't forget to RSVP by email for the Ice Cream Social on November 30th. *RSVP deadline MONDAY Nov 25th*.

There will be no Chapter A monthly meeting in December.

Happy Holidays and Happy New Year,

Jocelyn Piechowiak

GWTA WA A Chapter Director

jocelynpiechowiak@hotmail.com

206-249-6310

Chapter Treasurer



Charlie and Ann Butters



Ride Coordinator(s)

Chapter "A" Stores:



Joe Leon

Come see Joe at the meetings!
He might just have that perfect
GWTA item for you.

50/50 Drawing



Dianna Hemmi



Social Event Team
Lets Start One!



Let's talk Motorcycle Battery's. When should they be replaced? How do you evaluate the condition of the battery?

Unlike your tires, the battery's do not have tread or wear marks to tell you when it is time to replace them. Some owners replace the battery every three years. Some wait until the battery dies but that is an iffy proposition. You may be hundreds of miles away from home when it decides to quit. A well cared for battery in a good battery charging system can last many years. The way to know when to replace it is to monitor it closely.

How do you know what condition the battery is in? You judge the condition of the battery by voltage, current and load carrying capability. You really need an on-board voltmeter to start with. But I do not think Honda has put voltmeter's on their motorcycles in the last twenty years or more. So, what do you do?

Those of us that rely on our machines for reliable transportation have installed aftermarket digital voltmeters. That is a good beginning. You could also frequently check the battery voltage with your Volt-Ohm-Meter (VOM) but that takes time. And like checking tire pressures, it can get overlooked. Even so, what does the readout on the meter tell you. What do those numbers mean.

Basically, the voltage should be about 12.7 volts with the ignition switched off. When you turn on the ignition the voltage should not drop below 12.0 volts. When you press and hold the start button the voltage should not drop below 10.0 volts.

With a healthy battery and charging system, your voltmeter should read between 12.7 volts and 14.4 volts at any given time. The readout will be at the low end of that spectrum at idle and at the high end while you are rolling down the road. I would not be surprised if most of you already know these facts about your battery voltage. What you may not know is your battery can last you ten years if taken care of or it can die in six months if neglected.



To take care of it, keep a float charger attached to the battery if it is going to set for a few days. An example of a float charger is the DelTran Battery Tender or Battery Tender Jr. DelTran has a long list of very capable float chargers in their line-up. A lead acid battery will live for many years if it is kept charged. In the garage, you need to keep an



eye on the battery's state of charge as well. To do that you should have a battery tester.

For years I have used a simple VOM to check the battery's voltage but a good battery tester is needed to load test the battery. I have a good load tester for automotive batteries and it works well with batteries from 500 to 1000 cold cranking amps (CCA). However, our motorcycle batteries are usually 250 CCA to 400 CCA so this type of load tester is probably not the best tool for the job.





I have found an excellent, light weight and simple to use battery tester. It is made by Schumacher. It is the [Schumacher BT-175](#) and sells for under \$60 on Amazon. It is quick, accurate and an easy way to test your 12V batteries with simple instructions. It has a large digital display and provides an analysis of the battery's health by showing the battery voltage and CCA of the battery under test.

The [Schumacher BT-175](#) tests multiple systems. You can check your connected battery's voltage, determine if the battery is good or should be replaced, diagnose a problem in your starter system, and evaluate the operation of your vehicle's charging system. The digital display is easy to read and is accurate to two decimal places. It works with many battery types and is compatible with 12V SLI and VRLA/AGM/gel batteries in motorcycles, ATVs, boats, cars, SUVs, trucks, RVs, and classic car batteries up to 1200 CCA.

What are SLI and VRLA/AGM batteries? SLA is Sealed Lead Acid and VLRA is Valve Regulated Lead Acid, it is two different abbreviations for the same cell.

Absorbed Glass Mat (AGM) is a form of SLA/VRLA in which the electrolytes are soaked into dividers across plates

made out of sponge-like thin glass fiber matting. AGM batteries seem to be the favorite of most motorcycle owners. Unlike traditional acid filled lead batteries; they are spill-proof, they have a high-power output, they have a short charging time, they have a longer lifespan, they are durable and they are unlikely to build up sulfation.

So, when do you need to replace the battery? It depends on how you maintain it and what your voltage and CCA readings are. There are no set number of months or years that will let you know when to replace it.

- If your battery voltage ever drops to near 10.0 volts or below when you are cranking over the engine to start it, you need to change it.
- If it doesn't quite catch and start until AFTER your finger leaves the starter button, then it is time to change the battery.
- If you have let the battery discharge completely or gotten to the point that it would not start the engine until you charged it, you better start looking for a new battery.

The battery's life expectancy shortens quickly every time you make the mistake of letting it run down because you have left the key on for an extended amount of time without the engine running.



Mike Briese
WA-A Webmaster

Join Us on the 4th Saturday of Every Month for our monthly meeting.

Next Meetings are Nov 23rd, 2024 and Jan 25th, 2025.

Breakfast starting at **9:00am** with meeting following at **10:00am**.

Rainbow Cafe Restaurant.

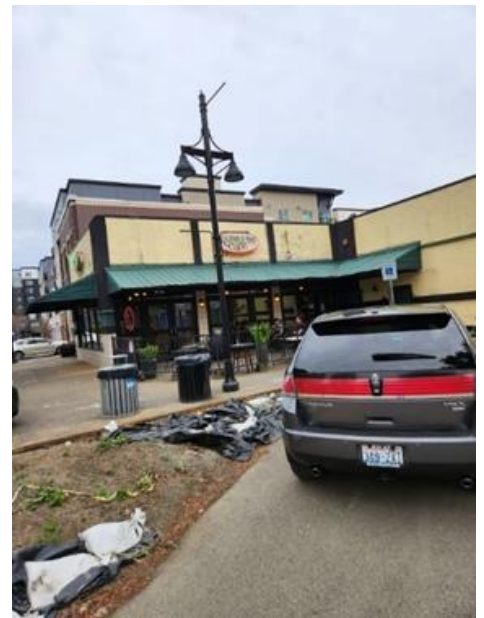
112 E. Main St.
Auburn, WA. 98002
(253) 833-1880

Weather Permitting Rides after the meeting.

Hope to see you there!



Front Entrance to Rainbow Cafe



Rear entrance to Rainbow Cafe

The Famous WA “A” 5 Aces Ride.....

At Chapter “A” we’ve noticed that 4 months each year have an additional 5th Saturday.

There will be no ride on November 30th.

We at Chapter “A” honor those extra Saturdays with an “Ice Cream Ride” aka The Famous WA “A” 5 Aces Ride. **The Chapter is buying!!**

Suggestions for destinations are welcome.



Gold Wing Preventative Maintenance



Dennis Murphy



Fictional Picture – Don't Try This!

I wanted to work in the afternoon when I went back to work. I was told, that's not going to happen. Guess what? When you put grease on the door handles of the drivers that you don't like you tend to get fired. Ha Ha! That happened to the guy I replaced.

So, I am working from 2 until about midnight. Very busy. Shoulder is doing fine but it's a lot of work when you are an old man.

I have nothing else as of now. But if you want something for Thanksgiving, try this from My wife. There isn't anyone that doesn't like this pretzel salad.

Dennis

Strawberry Pretzel Salad

- 2 ½ Cups Crushed Pretzels
- 3 Teaspoons Powdered Sugar
- ¾ Cup Melted Butter
- 8 oz Cream Cheese
- 1 Cup Powdered Sugar
- 8 oz Cool Whip
- 1 6 oz Strawberry Jello
- 1 20 oz Container Frozen Strawberries

Mix pretzels, 3 teaspoons powdered sugar and melted butter. Press into a 9 x 13" baking pan and bake at 350 for 10 minutes. Cool.

Mix cream cheese and 1 cup powdered sugar. Fold in whipped cream. Spread over cooled crust.

Mix Jello and 2 cups boiling water. Add frozen strawberries broken up with a fork. Let partially set before pouring over the cream cheese layer. Refrigerate.

Raspberries and raspberry Jello can be substituted for strawberries.



Snippets from Members of GWTA WA A

White Tupperware

By Ron Hemmi.

I rode my bike to a retired Gold Wing riders' group that meets every Thurs for lunch. I got there an hour early because of a previous appt. So, since I had time, I pulled out my rag n started polishing the bugs off and shinning up the white Tupperware. Other people pulled in for lunch n came over curious about my bike. "Man, what a pretty bike" what year is it. They talked about their bikes n bikes in general n most of them once had a Gold Wing. They wanted to know what my bike sounded like. So, I started it up for them with a warning. Now you are gonna have to listen very carefully. Put your hand on the valve cover to feel the vibration, none. Wings just purr.

Where Am I?

By Jeff Cline

I've been staying at an RV resort in Desert Hot Springs.
Beautiful pools and hot tubs and lots of sun!
The only problem has been wind!!



Sunshine Committee



We love to celebrate birthdays and anniversaries.
And when asked we send out Get Well and Sympathy cards.
Cheers,

Jocelyn and Michael Piechowiak

NOVEMBER CELEBRATIONS!



Not on our list? Use the form in this newsletter to be added.



CHUCKLES!



Courtesy of Facebook Pages

WHEN YOU CAN'T MAKE UP YOUR MIND IF YOU WANT TO GO RIDING, BOATING OR CAMPING





WA"A" Activities

"Chapter "A" has been enjoying FUN since September 1980.

Upcoming events

Be sure to check our website <https://www.gwta-waa.com> for details on the big events in 2024.

November 2024

1st Saturday – Visit Chapter Q in Centralia, WA.

2nd Saturday – Visit Chapter C in Everett, WA. NEW TIME 9am

4th Saturday – November 23rd. Monthly GWTA-WA-A Breakfast Chapter Meeting.

5th Saturday – November 30th. 5 Aces Ice Cream GWTA member Social. No Ride is Planned.



December 2024

1st Saturday – Visit Chapter Q in Centralia, WA.

1st Saturday – December 7th GWTA State Director hosting GWTA statewide members Christmas Party.

Members Free, Non-Members \$15. Didn't get the invite? Let me know asap. RSVP by Nov 15th

2nd Saturday – Visit Chapter C in Everett, WA. 9am

4th Saturday – December 28th, **CANCELLED:** GWTA-WA-A Breakfast Chapter Meeting. Enjoy the Holidays!

January 2025

1st Saturday – Visit Chapter Q in Centralia, WA.

2nd Saturday – No Chapter C monthly meeting.

Sunday Jan 12th 2pm Planning Mtg. Everett Powersports 215 SW Everett May Way. Dine out afterwards.

4th Saturday – January 25th. Monthly GWTA-WA-A Breakfast Chapter Meeting.

UPCOMING in 2025

Squaw Rock Resort Campout.

September 5-8, 2025 (Howie is planning to arrive on Sept 4.)

Squaw Rock RV Resort and Campground

15070 WA-410, Naches, WA 98937

(509) 658-2800

[Http://squawrockrvresortandcampground.com](http://squawrockrvresortandcampground.com)

Story in our September 2024 newsletter. Details also included on our website.

GWTA WA-C Evergreen Wings

New
Time

Join them for their monthly 2nd Saturday breakfast meeting
Evergreen Lanes, 5111 Claremont Way, Everett, Washington.
9:00 am Eat, 10:00 am Meet. A ride normally follows the meeting.
Chapter A meets at the Kent Chevron across from the McDonald's Restaurant
on 84th and 212th Streets in Kent, WA. 8:00 am kick stands up departure

2024 Calendar

Sat Nov 09 9am Breakfast Meeting Evergreen Lanes, 5111 Claremont Way, Everett

Sun Nov 17 2pm Planning Meeting then eat at Everett Powersports upstairs meeting room

Sat Nov 23 Visit Chapter A Mtg, Rainbow Café, Auburn

Kickstands Up 8am Mariner Park & Ride, 13132 4th Ave, Everett

Sat Nov 30 Chapter A Five Aces Day. The Ride has been cancelled.

Sat Dec 14 9am Breakfast Meeting Evergreen Lanes, 5111 Claremont Way, Everett

Sun Dec 15 6pm Christmas Party at Village Taphouse & Grill 1204 3rd St, Marysville

Sat Jan 11 No monthly meeting. See Planning Meeting.

Sun Jan 12 2pm Planning Meeting for 2025. Everett Powersports 215 SW Everett Mall Way
Everett. We will go out to eat after the meeting.

Sat Jan 25 Visit Chapter A Mtg, Rainbow Café, Auburn

Kickstands Up 8am Mariner Park & Ride, 13132 4th Ave, Everett

The **2025 Monthly meetings at new location.** December Newsletter will have more details.

EVERYTHING ON THIS CALENDAR IS SUBJECT TO CHANGE...

questions/comments/changes...contact howiedickerman@outlook.com

VISITING OUR GWTA WA CHAPTERS:

Chapter Q in Centralia, The Q Crew

Monthly breakfast meeting on the 1st Saturday. Breakfast at 8am, Meeting at 9am.

Call for Location. CD Steve Henson (360) 736-5159

We meet at the McDonald's on South Tacoma Way and Hwy 512 for a 7:00 am kick stands up.

(GWRRA) WA U, The Okanogan Valley Wings

Monthly Breakfast meeting on the 3rd Saturday. Call for Location. Breakfast at 8am, Meeting at 9am.

CD Teri Mitschelen (509) 429-1751. ACD Mel Caylor (509) 322-2546

(GWRRA) WA-N Update as of October 2024

Independent. Don Sudahl, de facto Director. No monthly breakfast meetings.

November 2024 through April 2025, Dinner socials on the 2nd Tuesday at 6 PM at a different location each month. Call or email me for details: 509-993-5501 (C) foxfour22@gmail.com

(GWRRA) WA-X Vancouver WA

This Chapter has Weekly Wanderings at least once a week usually on Tuesday. Visit our website.

<https://www.flightsofthephoenix.com/weeklyrides/>

Gold Wing Touring Association 2024 Calendar of Events

*Destination Friendship
Established 1987
"All Bikes Welcome"*

Be sure to check websites:
<https://www.gwta-waa.com> or <https://www.gwta.org> for details on the events.

October 2024

November 2024

December 2024

December 7th – GWTA WA State Christmas Party. Eagles in Kent 1pm. RSVP deadline was Nov 15th.
Members Free, Non-Members \$15. Fun activities planned.

UPCOMING IN 2025:

July 14-17, 2025 GOLD RUSH, Billings MT.
Signup Form and Details on GWTA website.

September 5-8, 2025 Squaw Rock RV Resort and Campground
15070 WA-410, Naches, WA 98937 (509) 658-2800
[Http://squawrockrvresortandcampground.com](http://squawrockrvresortandcampground.com)

Find out what is going on in other GWTA chapters' neck of the woods:

[GWTA - Motorcycle Touring Association](https://www.facebook.com/groups/51175813698)

<https://www.facebook.com/groups/51175813698> currently 2.3K following.

2024 GWTA National Chapter List

| Region | ST | CH | Name | Director | Email | Phone |
|--------|----|----|----------------------------|------------------------|-------------------------------------|--------------|
| A | OR | A | Rogue Valley Wings | John Hunrath | hunrath@comcast.net | 916-802-0734 |
| A | WA | A | Seattle Wings | Jocelyn Piechowiak | Jocelynpiechowiak@hotmail.com | 206 249 6310 |
| A | WA | C | Evergreen Wings | Howie Dickerman | howiedickerman@outlook.com | 206-571-3273 |
| A | WA | F | Fun & Friendship Riders | Lisa Alberts | nadatoy@comcast.net | 253-350-4594 |
| A | WA | Q | Q-Crew | Stephen Hennson | debsteve714@msn.com | 360-489-5275 |
| A | WA | U | Okanogan Valley Wings | Teri Mitschelen | mrswingnut@ncidata.com | 509-429-1751 |
| B | CA | A | Rid'n Free Motorcycle Club | Manny Bernstein | mannyeb@yahoo.com | 209-423-1226 |
| B | CA | F | River City Wings | Robert Kyes | bobkatrcw4784@gmail.com | 916-284-5572 |
| B | CA | L | Clear Lake Road Riders | Lynn Hollenback | lynnhollenback@sbcglobal.net | 707-245-4270 |
| B | CA | P | Diablo Valley Wings | Harry Davis | harrykaren@comcast.net | 925-768-4903 |
| B | CA | R | Monterey Bay Wings | Paul Androwsky | fourandrowsky@aol.com | 510-709-8187 |
| B | CA | S | Silicon Valley Wings | Flip Morton | flip.gwta@gmail.com | 408-391-9013 |
| B | CA | T | Tri-County Travelers | Michael Scott Koller | scott.vette.koller@gmail.com | 530-635-3411 |
| C | IL | B | RiverBend Riders | Philip Schaefer | schaeferphilip788@gmail.com | 618-671-7181 |
| C | IL | C | Windy City Wings | Carol Seith/Bill Seith | cjseith@aol.com; wdseith@aol.com | 630-217-1829 |
| C | IL | H | River City Riders | Jamie Caffrey | jimjam2002@yahoo.com | 309-314-6027 |
| C | NE | A | Heartland Wings | Karen Durand | kjkdurand@msn.com | 402-871-6130 |
| C | NE | C | Husker Wings | Alan Rosenboom | asrosenboom@yahoo.com | 402-499-8938 |
| C | NE | Z | Country Wings | Mary Flora | mwjoyride@abbnebraska.com | 402-426-2254 |
| D | AL | H | North Alabama Wings | Jimmy Cottingham | northalabamawingschapterh@gmail.com | 256-221-7299 |
| D | TN | A | Nashville Tour Riders | Jason Ashworth | jason.ashworth78@gmail.com | 615-479-1174 |
| E | KS | A | Air Capital Wings | Kelly Felix | kdfelix7@cox.net | 316-305-9433 |
| F | MI | A | Capital Area Wings | Gene Hoover | riorider50@yahoo.com | 517-262-1065 |
| F | MI | C | Cereal City Wings | Anthony Miller | tonymiller52@hotmail.com | 269-963-3985 |
| F | MI | E | Wings of Eagles | Rick Herington | panthersfive@juno.com | 269-623-5507 |
| F | MI | G | Gee Whiz | Darryl Dooley | dlldooley@wideopenwest.com | 313-605-3115 |
| F | MI | H | Livingston Wings | Ronald Klann | rbklann@yahoo.com | 734-277-5111 |
| F | MI | N | Northwoods Wings | Randy Treynor | randmel@yahoo.com | 616-794-2777 |
| F | OH | A | Toledo Star | Carl M. Hovey | carlgwta@bex.net | 419-509-3606 |
| H | CT | V | Valley Riders | Joe Delnicky | jdelnicky@snet.net | 203-231-6105 |





GOLDWING TREASURES

Buy / Sell / Donate Motorcycles and/or Parts

Ads will be listed for six (6) months or until transaction completion!

For GWRRA and GWTA Members Ads Free!

Got something to buy, sell, or trade? Got something on your wish list?

Got something you wish to donate or give away?

FOR SALE:

Hello Goldwing members

I wish to sell my
'09 Gold Wing: GL 1800

Bruce Smith
858-336-1300



At 75 years old, my riding sunset has arrived.

I am a former CA F member (San Diego), now living near you in Gig Harbor.

Although not ridden in 2 yrs, it's a good machine with a few bells.

'09 Gold Wing: GL 1800/ Audio-Nav-GPS / CB radio, backrest, highway pegs.

46K: mostly easy, dry, open road SoCal, AZ, NV riding. No wet weather WA riding.

Original owner. VIN: 1HFSC47L19A801167

VIN inquiry will reveal clean history: no accidents, theft, nor any other issues.

Serviced and w/receipts.

Always garaged.

Good tire tread.



Left box has cigarette lighter for USB cell phone charging
 Saddle bags and trunk carpets
 Saddles, trunk, and trunk rack travel bags (4 total)
 Battery Tender Plus trickle charger
 Portable air pump w cigarette lighter plug
 Motorcycle cover for touring trips
 Butler cup holder



Auto Trader suggests \$10K and 9K. KBB suggests \$11K.
 I think \$10K is a fair no haggle price.

Kindly pass the word.

Bruce Smith

858-336-1300

ALSO FOR SALE: Riding gear from Bruce Smith. 858-336-1300

Olympia Winter Touring (longer length) jacket WITH liner. Purchase \$350. Will sell for \$85.

Men's size Large

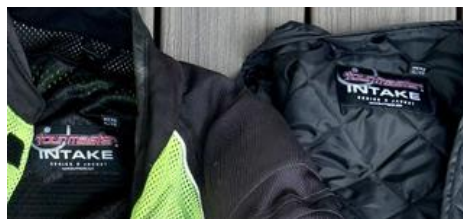


Women's size Medium. Will sell as above for same price.



Tourmaster Intake Series 2 / Summer/Spring mesh WITH liner. Purchase \$180 / will sell for \$45.

Men's XL ... as I noted they are sized smaller.



Women's BiLT / Med mesh summer/spring jacket.

Purchased \$160 / will sell for \$40.



Ladies Wilson's leather motorcycle jacket. Large, also sized a bit small. Purchase \$175. Will **sell for \$40**. Nice jacket ...like new.



Hot weather evaporation vests (worn under mesh jackets) @\$40 ... along with evaporation neck scars (\$15). The second set is in the zip baggie. The baggie is used to pour water into and let soak before donning it under your jacket.

Vest/scarf set @ 25% =sell for \$10 (actual \$13.50). Running the searing hot Mojave Desert, they were not too bad actually.



THE END

FOR SALE



Hello. I am looking to sell my 1988 Dynastic Blue Goldwing 1500 motorcycle that was converted to a trike later in life. My husband Ray Jorgensen kept all the parts of the motorcycle that were removed for the trike conversion.

My husband Ray and I were members of the GWTA and GWRRA many years ago. Ray has passed and I no longer ride so pardon any dust in the pictures.



Seeking \$8K for the Trike and loose parts. Or Best Offer.

Carmi Jorgensen
crj1mt@peoplepc.com

GWTA WA Chapter "A" Seattle Wings

Newsletter and Phone Tree Information Request

The following request is for the purpose of gathering current information on the Chapter "A" roster. It will assist in the accuracy and correct mailing of the Chapter Newsletter to our members and followers. It will also assist us in the timely communication of impromptu rides and any changes in planned rides or events via the Chapter "A" Phone Tree and/or email.

NAME _____

Significant Other (optional) _____

Former GWRRA State and Chapter? Circle Yes or No . If yes, State _____ Chapter _____

GWTA Member and Status: Circle Yes or No . If yes, State _____ Number _____

CONTACT INFORMATION:

NOTE: *The Following will be only used for Phone Tree/Administrative only.*

Home Address: _____

Phone Number: _____

Email Address: _____

SUNSHINE COMMITTEE:

Would you like to receive?

1. Birthday Cards and be noted at the monthly meeting/in the newsletter during your birthday month?

If yes, Month/Date _____

Significant other (optional) Name _____ Month/Date _____.

2. Anniversary Cards and be noted at the monthly meeting/in the newsletter during your anniversary month? If yes, Month/Date/ (and Year?) _____

3. We send out Get Well and Sympathy Cards. Is this okay? _____

Please return this form in person or by email to either the CD or any board member.

Thank You for Joining us in our Destination of Friendship.

DID YOU KNOW?

Chapter "A" became officially operational in September 1980
(This is our 44th year).

The Chapter CD Lee Adams was known around the area as the Ape man due to he had so many Apes attached to his bike. They almost covered the bike. I, Don Hatley, was ACD at the time and took over as CD when Lee was transferred to Texas by Boeing. It only made sense that the Ape would continue to be our mascot.

--Don Hatley, original member



%%%

Opportunities to Volunteer your time as an individual.

These events are NOT sponsored by or affiliated with GWTA.

None noted at this time.



Thanks for Reading our Newsletters!

Got an Article, Story, Funny or Buy/Sell/Give Ad?

Be sure to submit by midnight of the 20th of the month to be included in that month's newsletter.

Send your comments, questions, and submittals
to Newsletter Editor

Jocelyn Piechowiak.

jocelynpiechowiak@hotmail.com

Call or Text 206-249-6310.

THE END.